

# Electric Vehicle (EV) Charger Installation



## 2022 Rebate Application

### Member Information

Name \_\_\_\_\_ Account # \_\_\_\_\_

Address where EV charger is installed \_\_\_\_\_

City \_\_\_\_\_ State \_\_\_\_\_ ZIP \_\_\_\_\_ Phone \_\_\_\_\_

Dealership purchased from \_\_\_\_\_ Maximum electric range (miles per charge) \_\_\_\_\_

By signing this application, I certify the EV charger for which I am claiming a rebate are qualifying products and are installed at the address listed above which represents a valid Itasca-Mantrap account.

Signature \_\_\_\_\_ Today's date \_\_\_\_\_

**Credit my account**

**Send a check**

### Electric Vehicle Service Equipment Information

Make \_\_\_\_\_ Model \_\_\_\_\_ Year \_\_\_\_\_

VIN Number \_\_\_\_\_ License plate # \_\_\_\_\_ Purchase Date \_\_\_\_\_

Purchase Location (Dealership name and address) \_\_\_\_\_

### Contractor Information

Contractor Name \_\_\_\_\_ City \_\_\_\_\_ State \_\_\_\_\_

Rebate is available only for the installation of a Level 2 EV charger installed on or after January 1, 2022. The charger must be installed where electricity is supplied by Itasca-Mantrap. To qualify for the rebate, charger must be on a whole house time-of-use rate, or off-peak charging rate. If signing up for off-peak charging rate, charger must be hardwired into a circuit panel and be separately metered and controlled on the off-peak program. Rebate submittal must follow the guidelines. Itasca-Mantrap is not responsible for inaccurate information supplied by retailers/contractors. Rebate program is subject to change or cancellation without notice. Call Itasca-Mantrap to verify rebate program status.

### Important:

- Rebate amount: **up to \$500** to offset the cost to install an EV charger.
- Limit one rebate per application.
- EV charger must be installed within Itasca-Mantrap's service territory.
- Incomplete forms will not be processed.
- For off-peak rate program: Charger must be hardwired into a circuit panel and be separately metered and controlled on the off-peak program.
- Complete all member information including your account number and sign this form.
- Submit completed rebate form and a copy of electrician's bill for wiring the charger or outlet within 90 days of purchase date to:

Itasca-Mantrap, PO Box 192, Park Rapids, MN 56470

- For questions, contact Itasca-Mantrap at 218-732-3377 or toll free at 888-713-3377.

# ENERGYWISE

for your Home



Save money every time you charge your plug-in electric car with two options that let you choose what time you charge your car and how much to pay. Plus, get a rebate of up to \$500 on installing a charging station.

You'll wake up fully charged and get off to a great start - now and for many mornings to come.



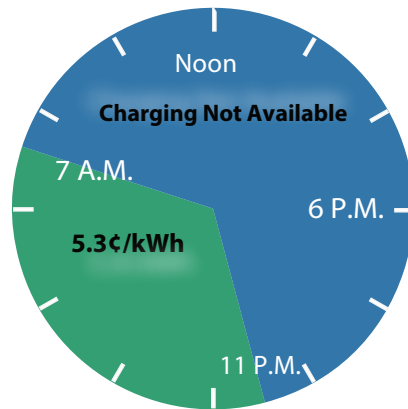
ChargeWise

## ELECTRIC VEHICLE (EV) PROGRAMS

Itasca-Mantrap offers two voluntary options for charging your EV at home. The off-peak program offers the lowest price, while the whole house time-of-use program provides flexibility.

### Off-Peak rate

Itasca-Mantrap's off-peak rate offers members low cost electricity for

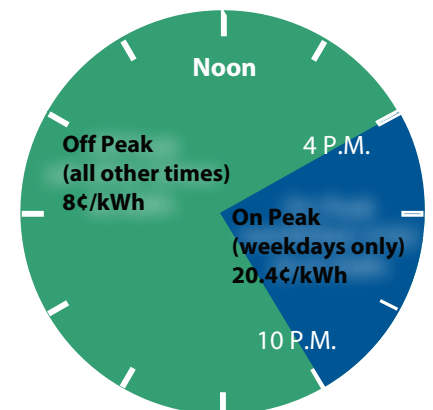


charging an EV. Electricity for charging your EV is available only during the off-peak hours of 11 p.m. to 7 a.m. Power will not be supplied outside of the off-peak hours and the charger or outlet must be hardwired into your circuit panel.

This program requires a separate meter. Itasca-Mantrap offers a rebate of up to \$500 to cover the cost of installing a charger on the off-peak program.

### Whole House Time-of-Use rate

A charger or outlet installed on the Itasca-Mantrap whole house time of use rate will always receive electricity, so you can charge your vehicle whenever you need. You pay the rate listed for all the electricity you use throughout your home, according to the time-of-day. The savings can add up when you make the choice to use energy at different times of day. Itasca-Mantrap offers a rebate of up to \$500 to cover the cost of installing a charger on the whole house time-of-use program.



On Peak (4 p.m. - 10 p.m. weekdays) = 20.4¢/kWh

Off Peak (all other times) = 8¢/kWh